

**Chippenham & Dis-
trict**



Young Person's Activity Booklet

Chippenham Museum Exhibition
18th January—22nd February 2020



COLOURING COMPETITION!

We want you to send in your fantastic coloured-in pictures from this booklet so we can share your work online! There's a prize for the best pictures from the following age groups:

Age 7 and under.

8-11 years old.

12—15 years old.

Get your mum or dad (or do it yourself!) to email your pictures to cdmdc12@gmail.com and then see your works of art online at

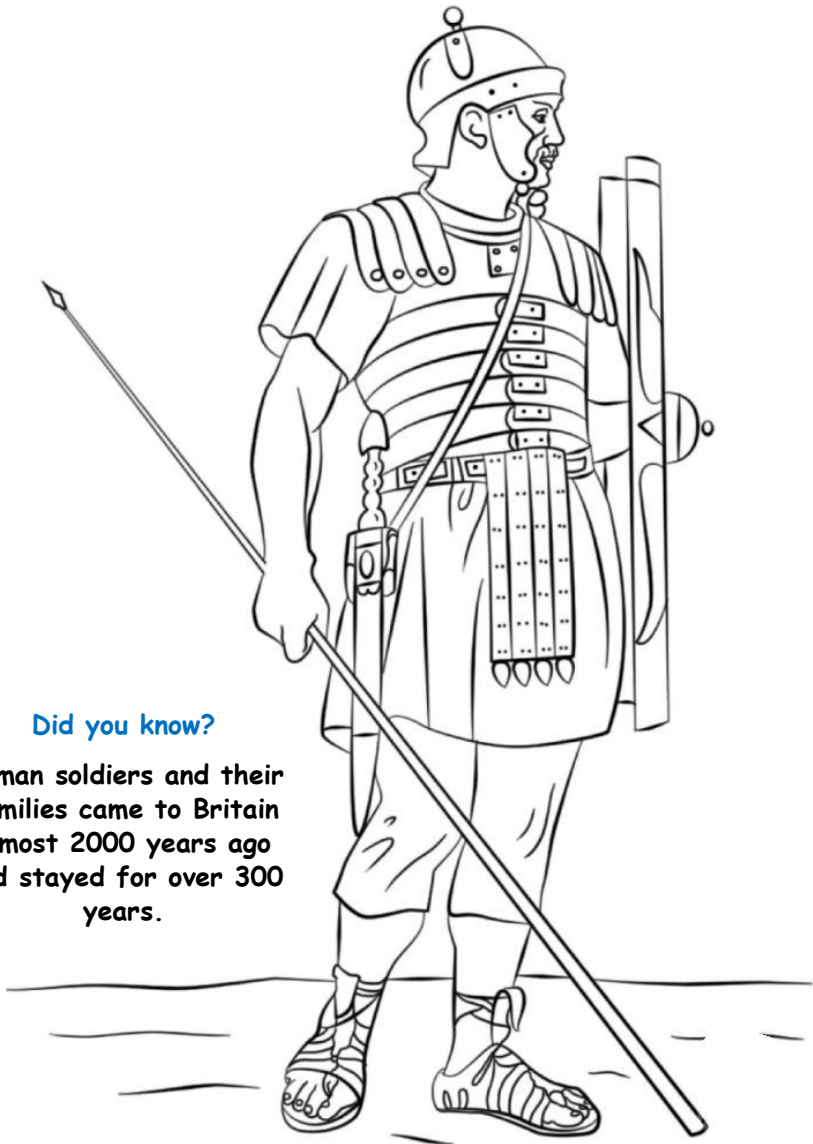
<https://www.chippenhamanddistrictmdc.co.uk/colouringcompetition>

Making sure you include your name, age and the town where you live. Judging will take place in early March.

Good luck!

Puzzle solutions can also be found on the website

Colour in the Roman Legionnaire



Did you know?

Roman soldiers and their families came to Britain almost 2000 years ago and stayed for over 300 years.

Can you help the detectorist find the gold coin?

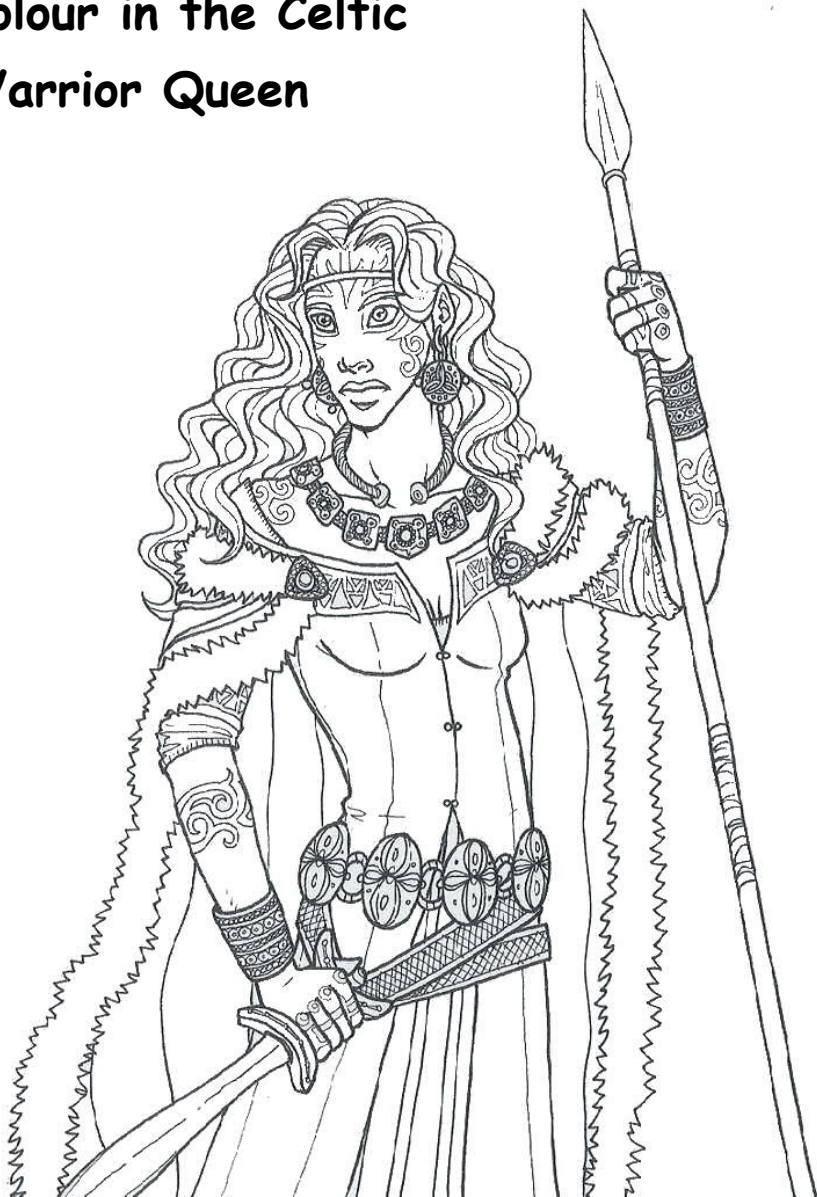
MAZE



Did you know?

Coins were thought to have been first used over 2500 years ago!

Colour in the Celtic Warrior Queen



Did you know? A famous Celtic queen names Boudicca rose up against the Roman occupation of Britain in around 60 AD. She was the joint ruler of the British Iceni tribe, who lived in a region of Britain now known as East Anglia, with her husband, Prasutagus.

WORD SEARCH

T X N N C A S K E T K E Y D Y
 R H T O S E A L M A T R I X G
 A E G E T A M P U L A Y L R N
 R C P I R T W Q Q L A L S O K
 O A R M E R U C F U E Q I V G
 T P P O A W E B P B X L F I G
 C B E S S T T T L L L S S C P
 E A N W H S E A G A Q A C T U
 T D D O A A T P D P H X H O R
 E G A R K O T E I A O O A R R
 D E N D R A M Z O P S N P I I
 A M T C O T H I M B L E E A T
 V O I R S I L V E R C O I N S
 V U G R P U R S E B A R R P C
 B N A I G R O E G E X A C T R

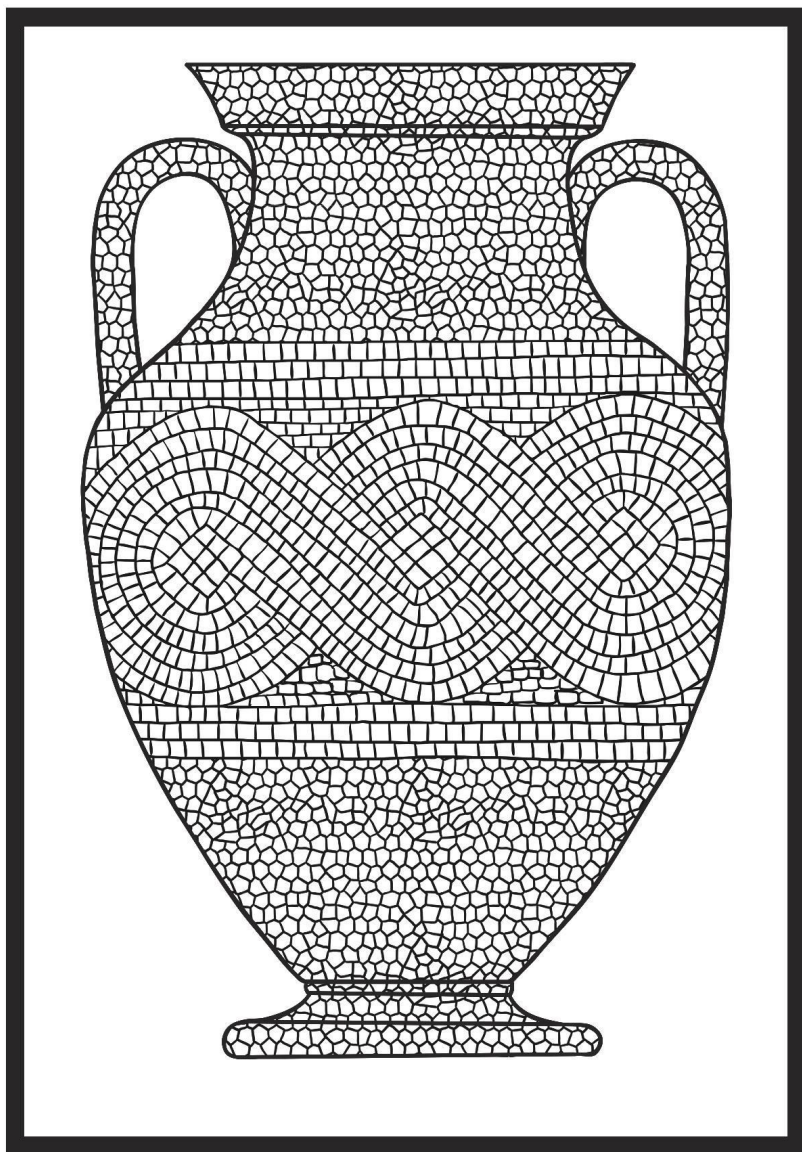
SILVERCOIN	SWORD
DETECTOR	CHAPE
SAXON	CAPBADGE
GEORGIAN	AXE
VICTORIAN	BUTTON
CROSS	TERRET
PENDANT	STIRRUP
THIMBLE	CROTALBELL
CASKETKEY	MEDALLION
PURSEBAR	GROAT
SEALMATRIX	
PIPETAMPER	
WEIGHT	
AMPULA	
PAPALBULLA	

SPOT THE DIFFERENCE



Can you find 12 differences between the two detectorists?

Colour in the Mosaic Jug



Did you know?

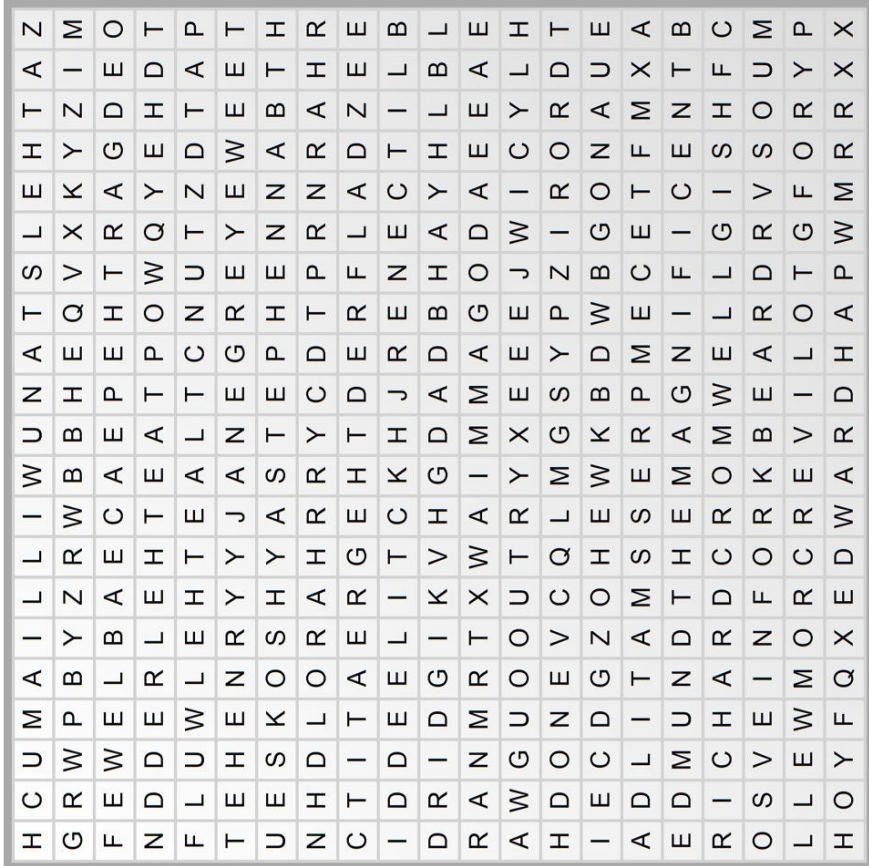
Detectorists often find very old bits of pots lying on the surface of the fields they detect on.

WORD SEARCH

See if you can find all of the Rulers

Rulers of England & Great Britain:

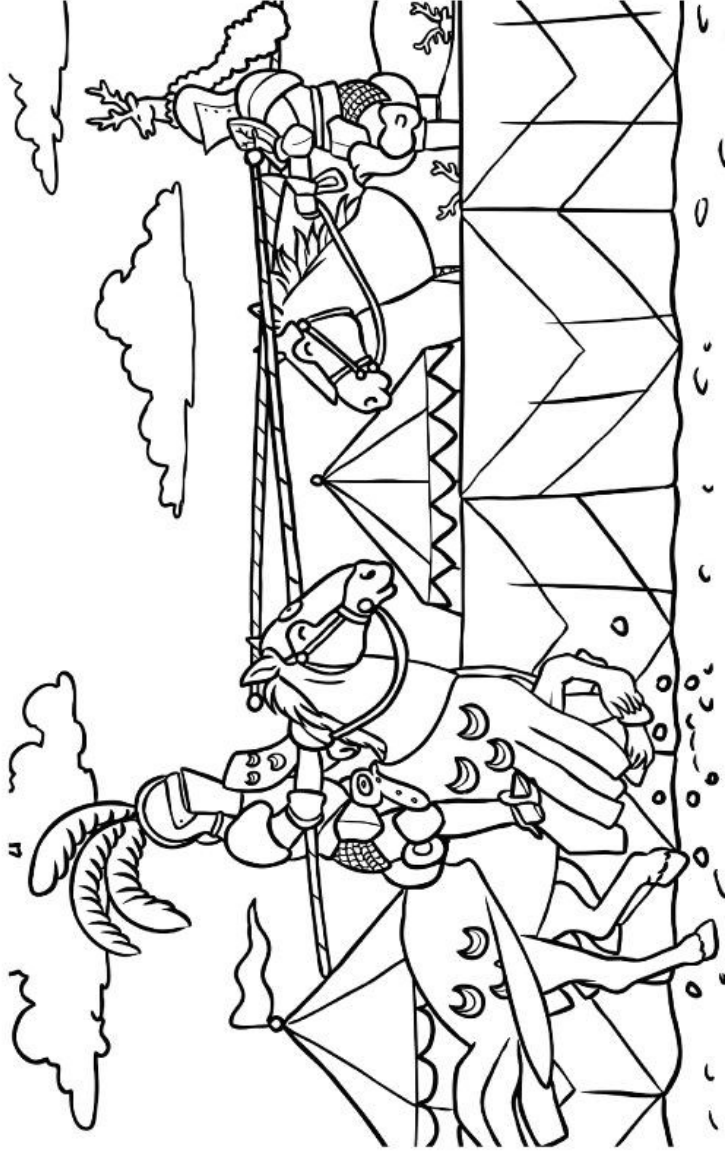
Aethelbald
Aethelberht
Aethelred
Aethelwulf
Alfred the Great
Anne
Athelstan
Charles
Cnut
Eadred
Eadwig
Edgar the Peaceable
Edmund
Edmund the Magnificent
Edward
Edward the Elder
Edward the Confessor
Egbert
Elizabeth
Empress Matilda
George
Hardicnut
Harold
Henry
James
Jane Grey
John
Mary
Oliver Cromwell
Richard Cromwell
Richard
Stephen
Svein Forkbeard
Victoria
William



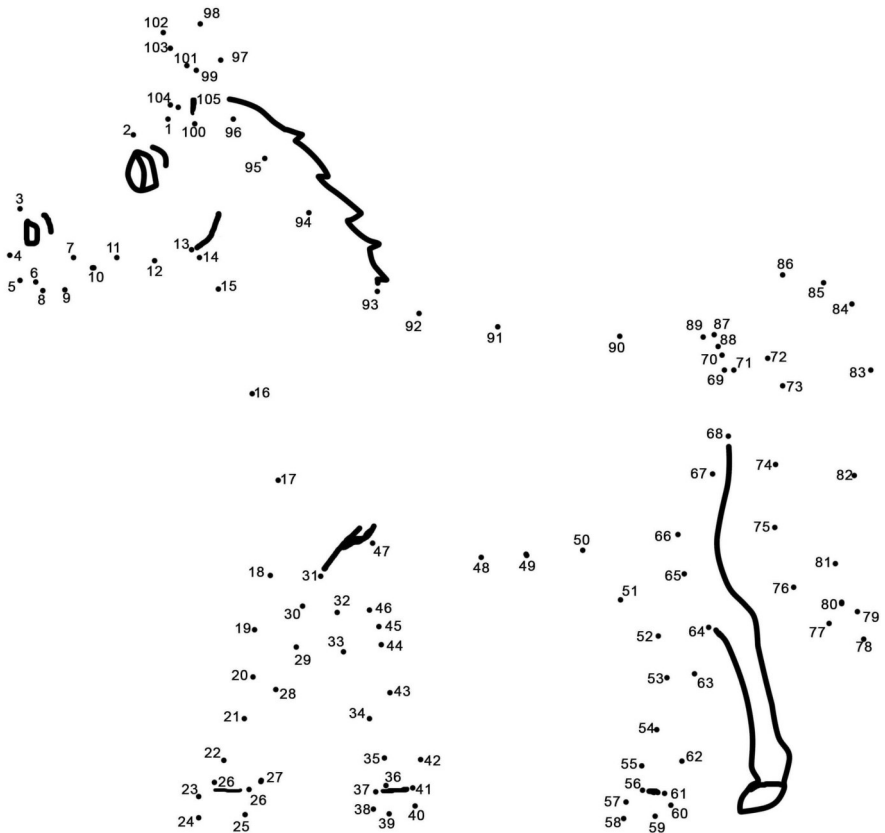
Colour in the jousting knights

Did you know?

Jousting was a sport for rich people in Europe during the Middle Ages. They were fought by knights on horses using different weapons such as lances, battle axes, daggers, and swords.



Dot to Dot

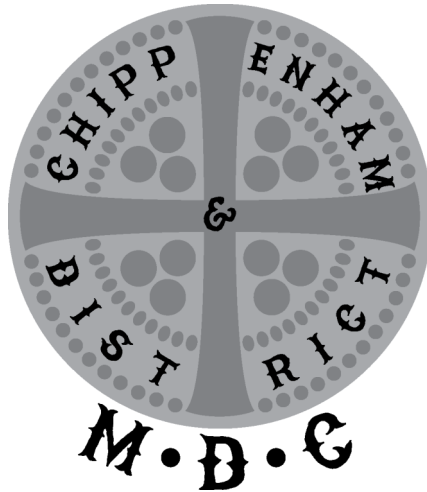


Did you know?

In the past, horses were used much more than they are used today for things like ploughing fields and for general transport. Because of this, detectorists are always finding horse-related things in the fields, including lots of these!



This page is for your notes



Thank you for visiting



Puzzle solutions can be found on the CDMDC Website

www.chippenhamanddistrictmdc.co.uk